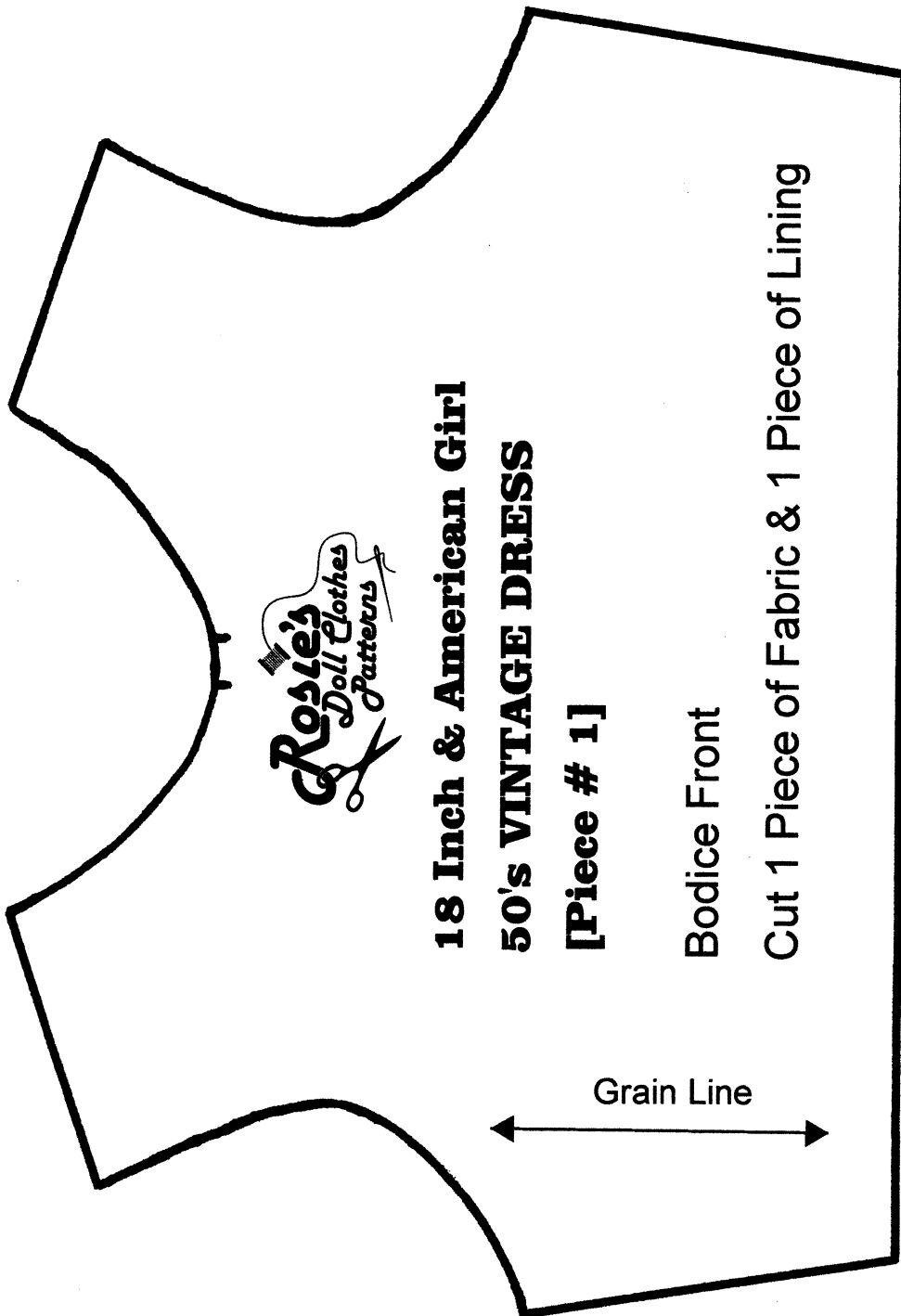


**18 Inch & American Girl
50's Vintage Dress**

← 2" (5 cm) →

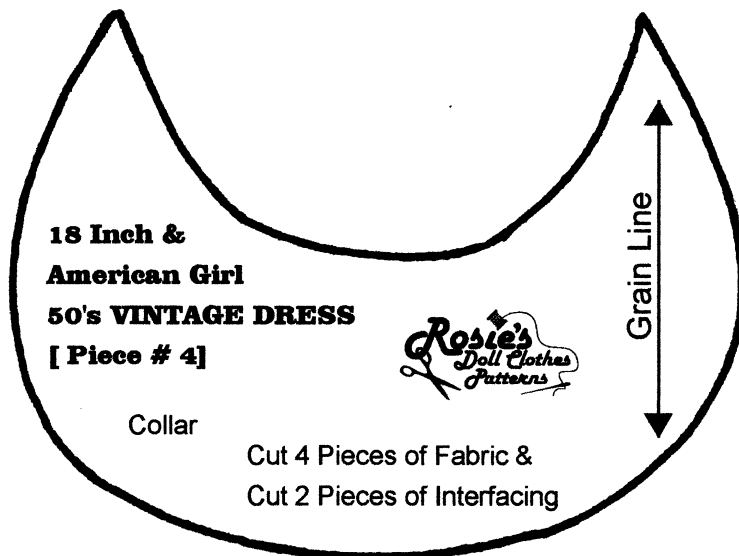
Tip: Check This Measurement
Before Cutting Pattern



**18 Inch & American Girl
50's Vintage Dress**

← 2" (5 cm) →

Tip: Check This Measurement
Before Cutting Pattern



**18 Inch & American Girl
50's Vintage Dress**

← 2" (5 cm) →

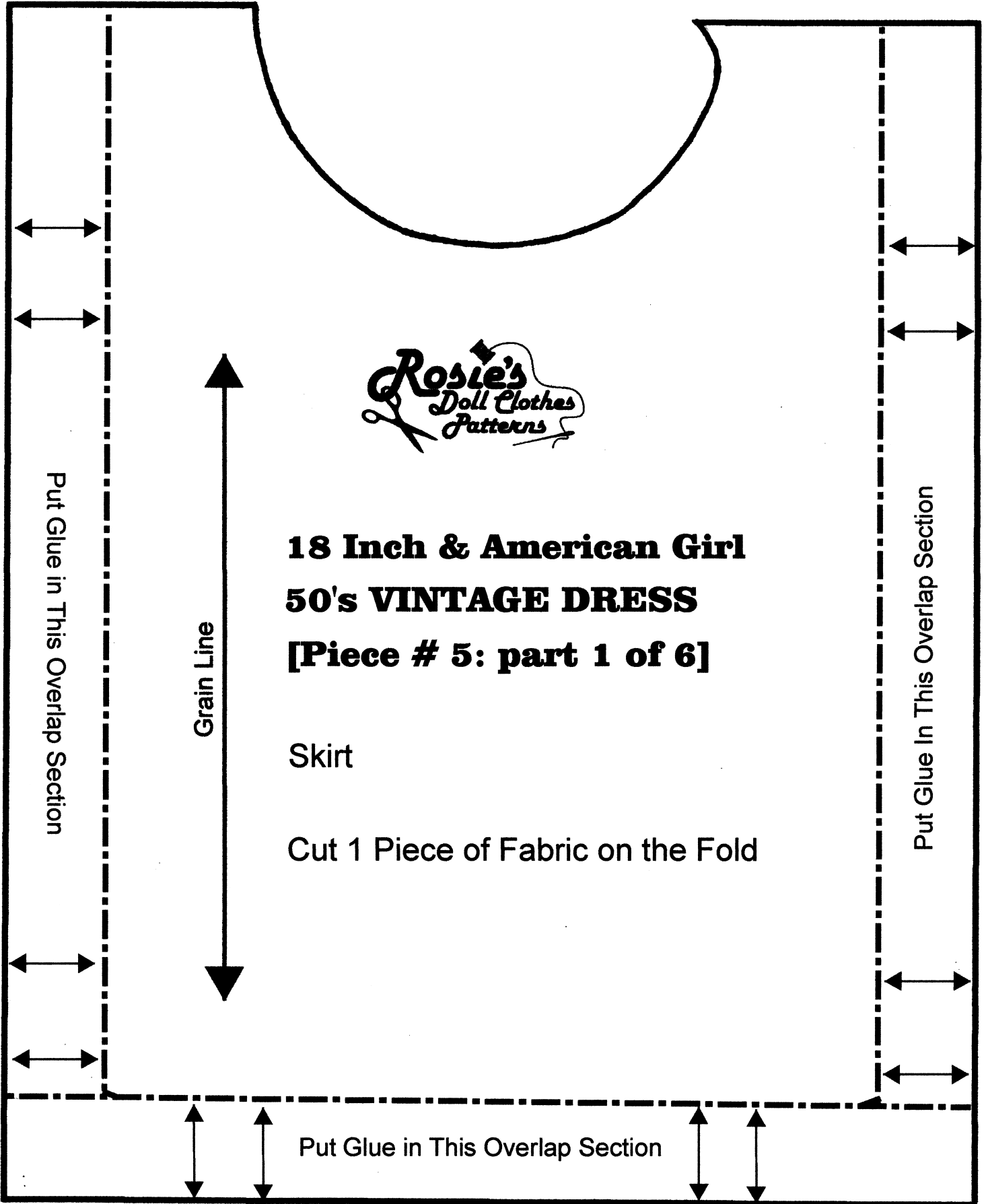
Tip: Check This Measurement
Before Cutting Pattern



**18 Inch & American Girl
50's Vintage Dress**

← 2" (5 cm) →

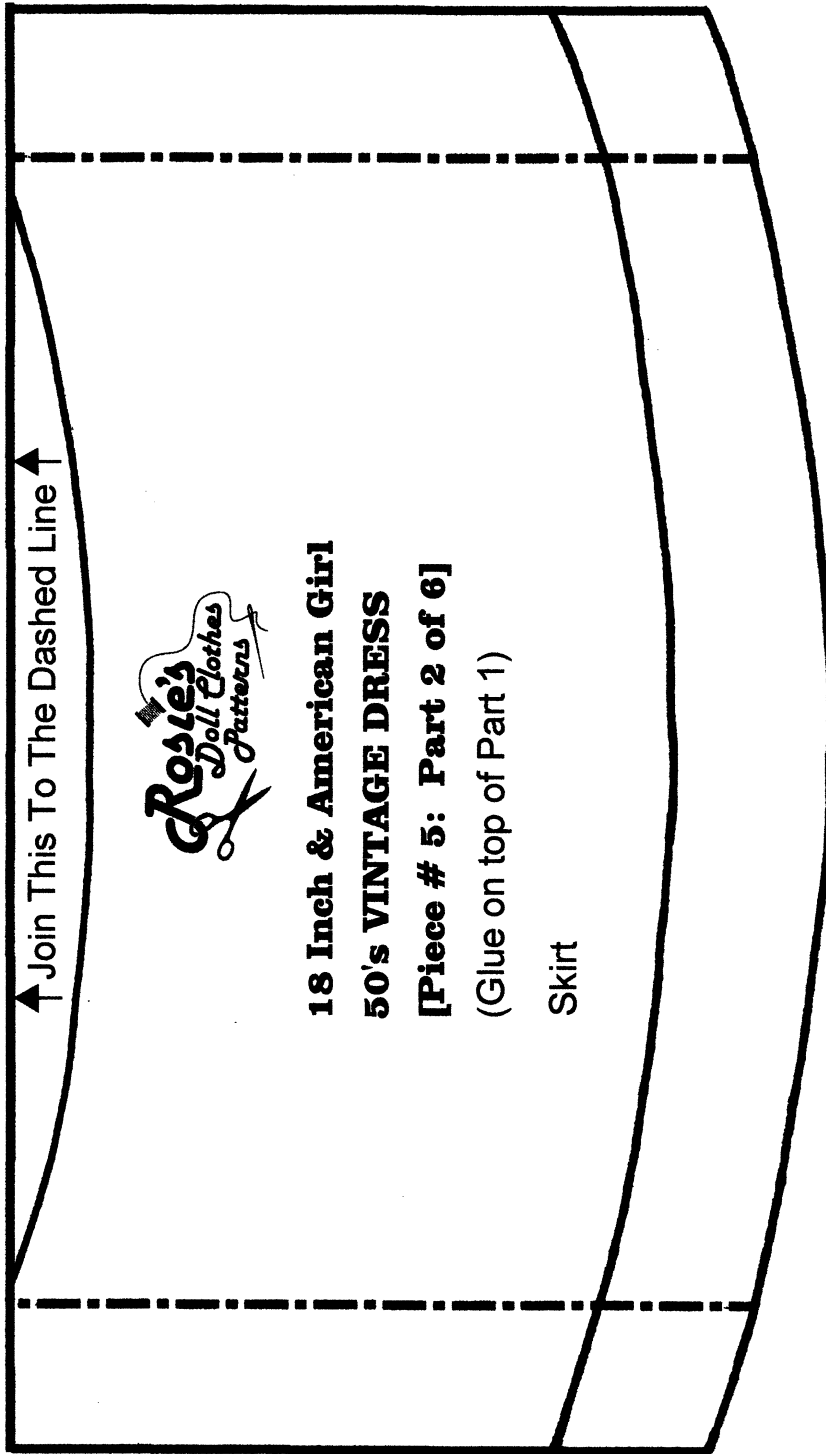
Tip: Check This Measurement
Before Cutting Pattern



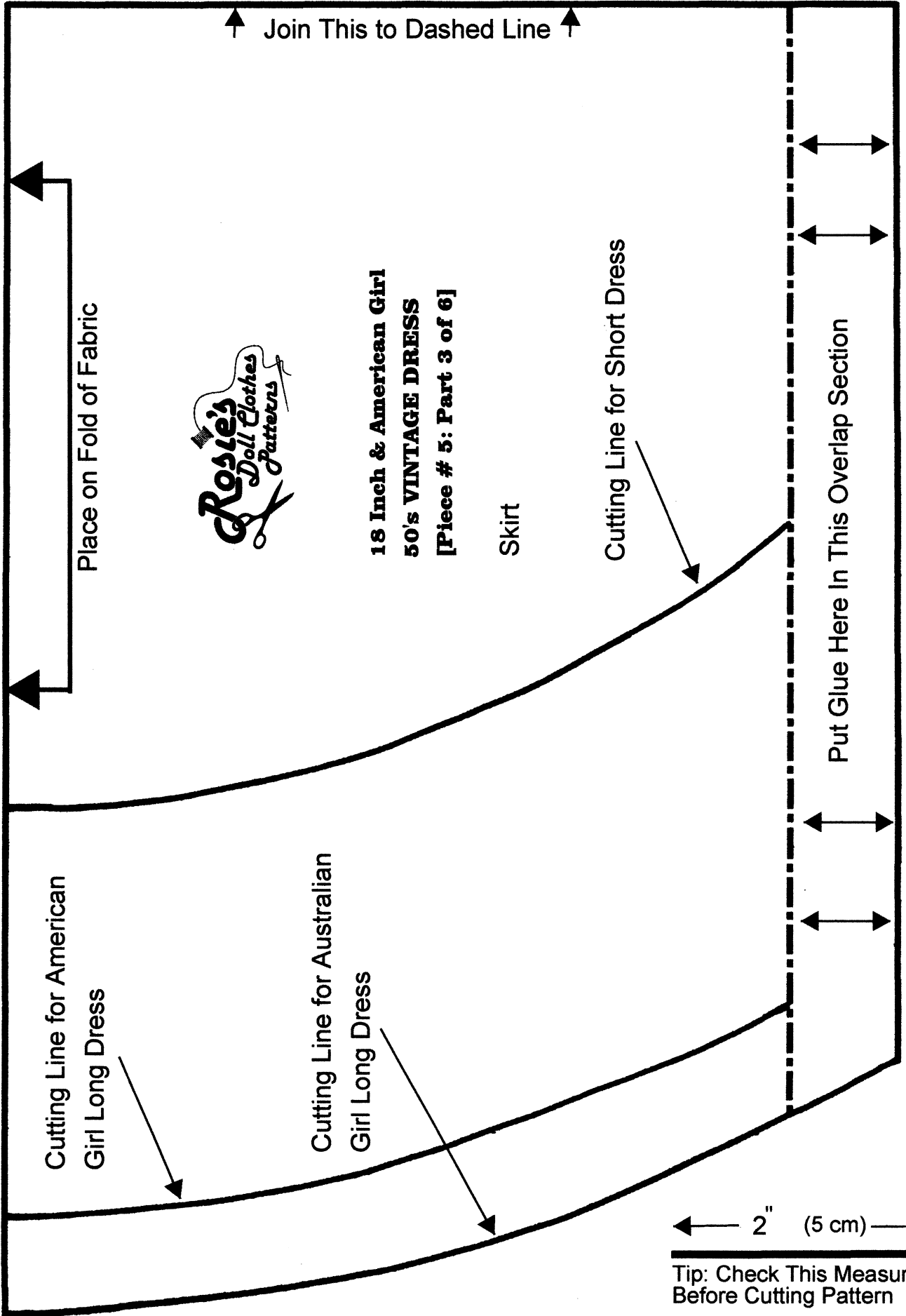
**18 Inch & American Girl
50's Vintage Dress**

← 2" (5 cm) →

Tip: Check This Measurement
Before Cutting Pattern



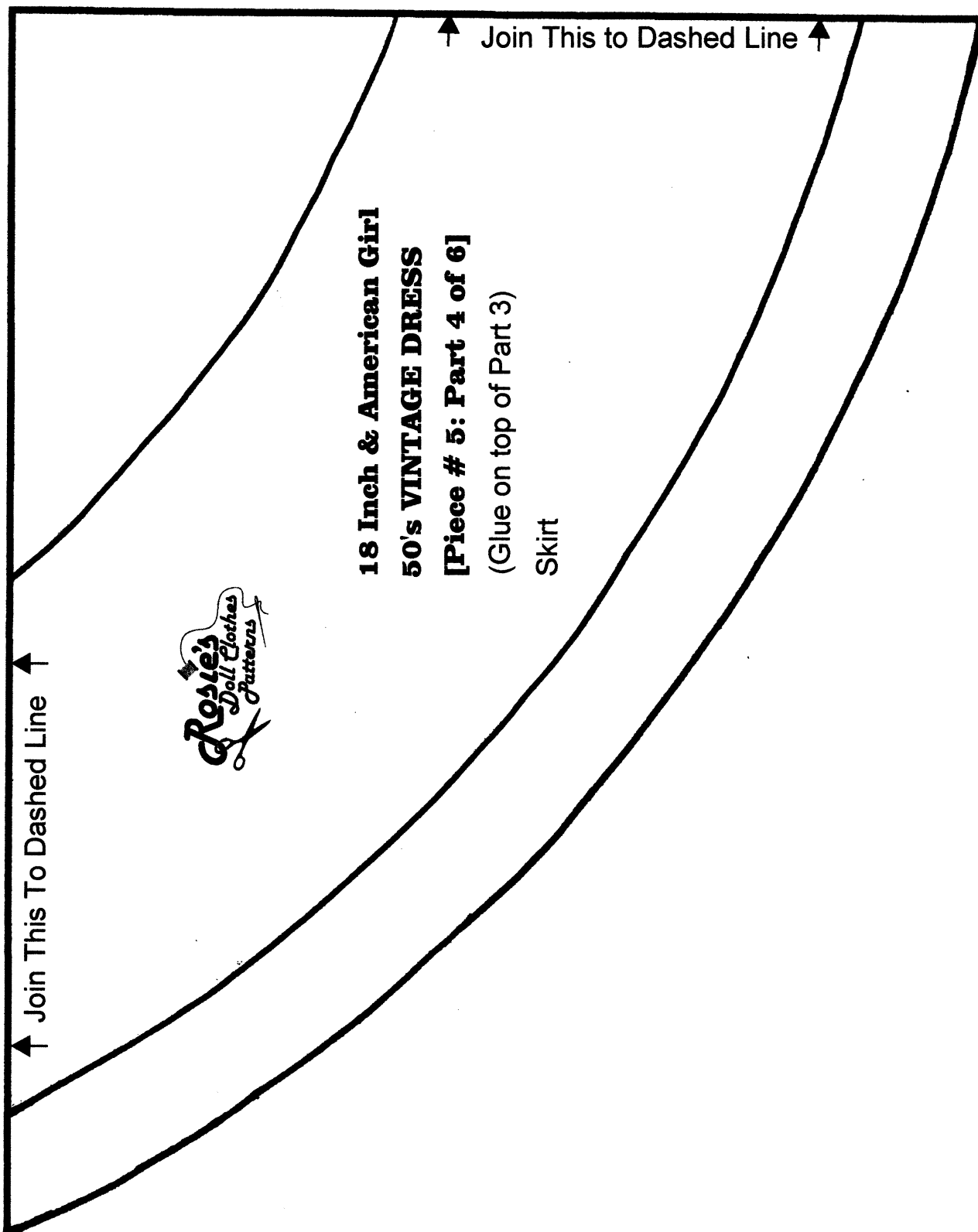
**18 Inch & American Girl
50's Vintage Dress**



**18 Inch & American Girl
50's Vintage Dress**

← 2" (5 cm) →

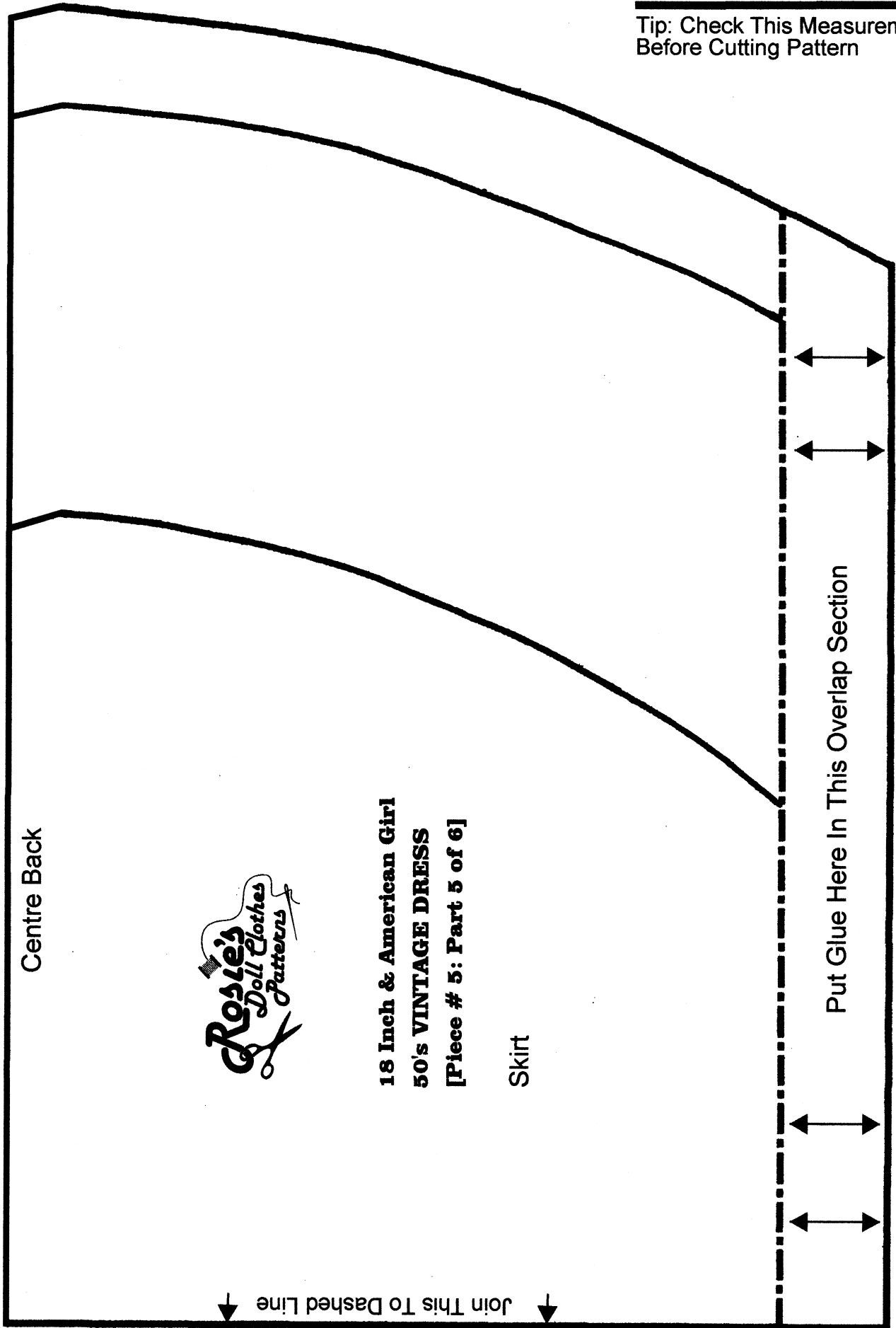
Tip: Check This Measurement
Before Cutting Pattern



**18 Inch & American Girl
50's Vintage Dress**

← 2" (5 cm) →

Tip: Check This Measurement
Before Cutting Pattern



Centre Back



**18 Inch & American Girl
50's VINTAGE DRESS
[Piece # 5: Part 5 of 6]**

Skirt

Put Glue Here In This Overlap Section

Join This To Dashed Line

**18 Inch & American Girl
50's Vintage Dress**

← 2" (5 cm) →

Tip: Check This Measurement
Before Cutting Pattern

