

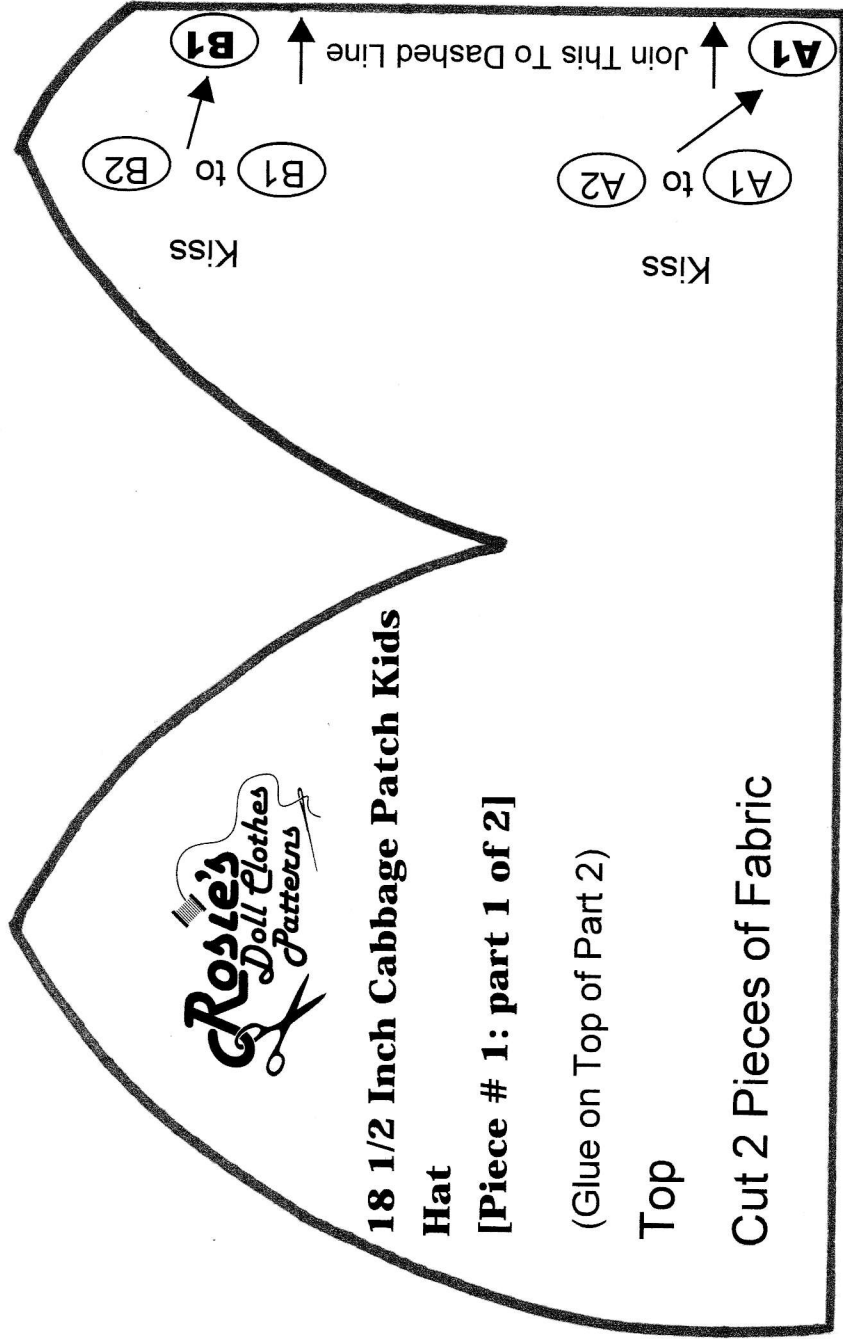
**Accessory**

**18 1/2 Inch Cabbage Patch Kids**

**Hat**



TIP: Check This Measurement Before Cutting Pattern



**18 1/2 Inch Cabbage Patch Kids**

**Hat**

**[Piece # 1: part 1 of 2]**

(Glue on Top of Part 2)

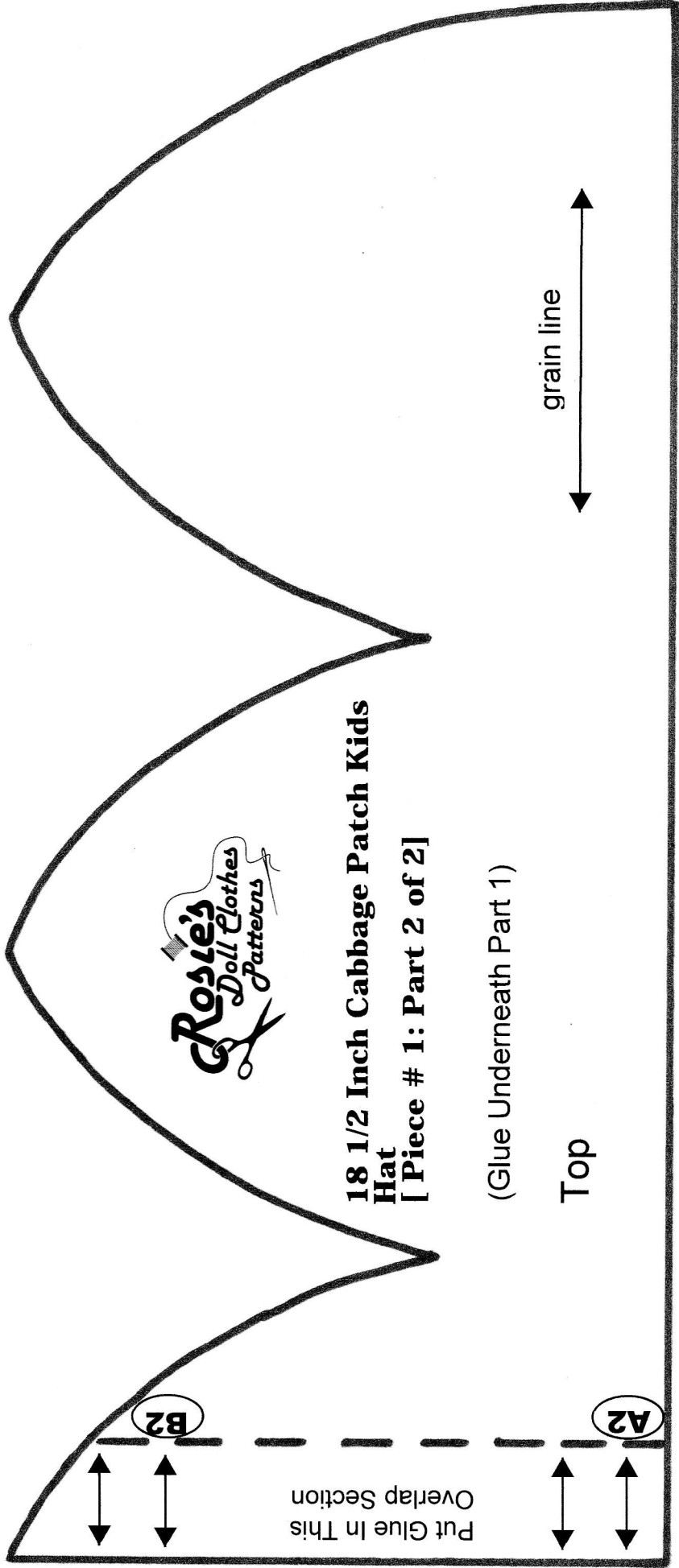
**Top**

**Cut 2 Pieces of Fabric**

**Accessory**  
**18 1/2 Inch Cabbage Patch Kids**  
**Hat**

← 2" (5 cm) →

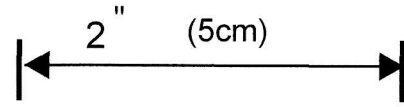
Tip: Check This Measurement Before Cutting Pattern



**Accessory**

**18 1/2 Inch Cabbage Patch Kids**

**Hat**



Tip: Check This Measurement Before Cutting Pattern

