

**18 1/2 Inch Cabbage Patch Kids
Sarong**

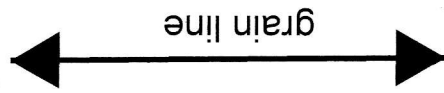
↑ Join this to the dashed line for Long Sarong



**18 1/2 Inch Cabbage Patch Kids
SHORT SARONG
[Piece # 1]
(Only one piece needed for Short Sarong)**

**LONG SARONG
[Piece # 1: Part 1 of 2]
(Glue on top of Part 2 for Long Sarong)**

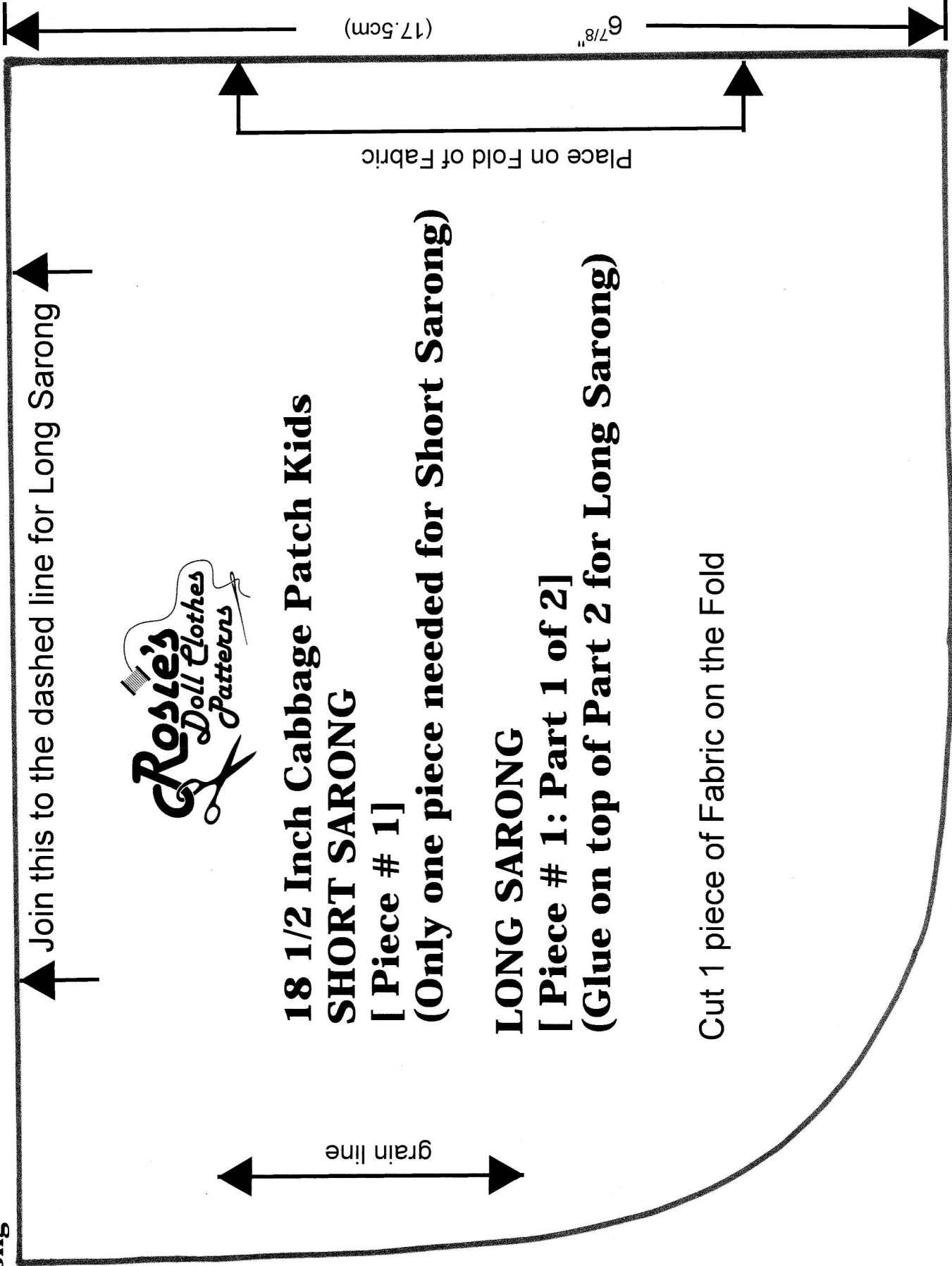
Cut 1 piece of Fabric on the Fold



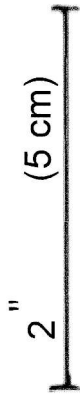
Place on Fold of Fabric

6 7/8" (17.5cm)

TIP: Check This Measurement Before Cutting Pattern



**18 1/2 Inch Cabbage Patch Kids
Sarong**



Tip: Check This Measurement Before Cutting Pattern



**18 1/2 Inch Cabbage Patch Kids
LONG SARONG
[Piece # 1: Part 2 of 2]**

(Glue Underneath Part 1)

