



**Cabbage Patch Kids
Pinafore, Dress & Skirt**


**18 1/2 Inch Cabbage Patch
PINAFORE DRESS**
[Piece # 2]

Bodice Bib


Cut 1 Piece of Fabric

Grain Line




← 2" (5 cm) →

Tip: Check This Measurement
Before Cutting Pattern


**18 1/2 Inch Cabbage Patch
PINAFORE, DRESS & SKIRT**
[Piece # 1: Part 1 of 2]
(Glue on Top of Part 2)

Skirt

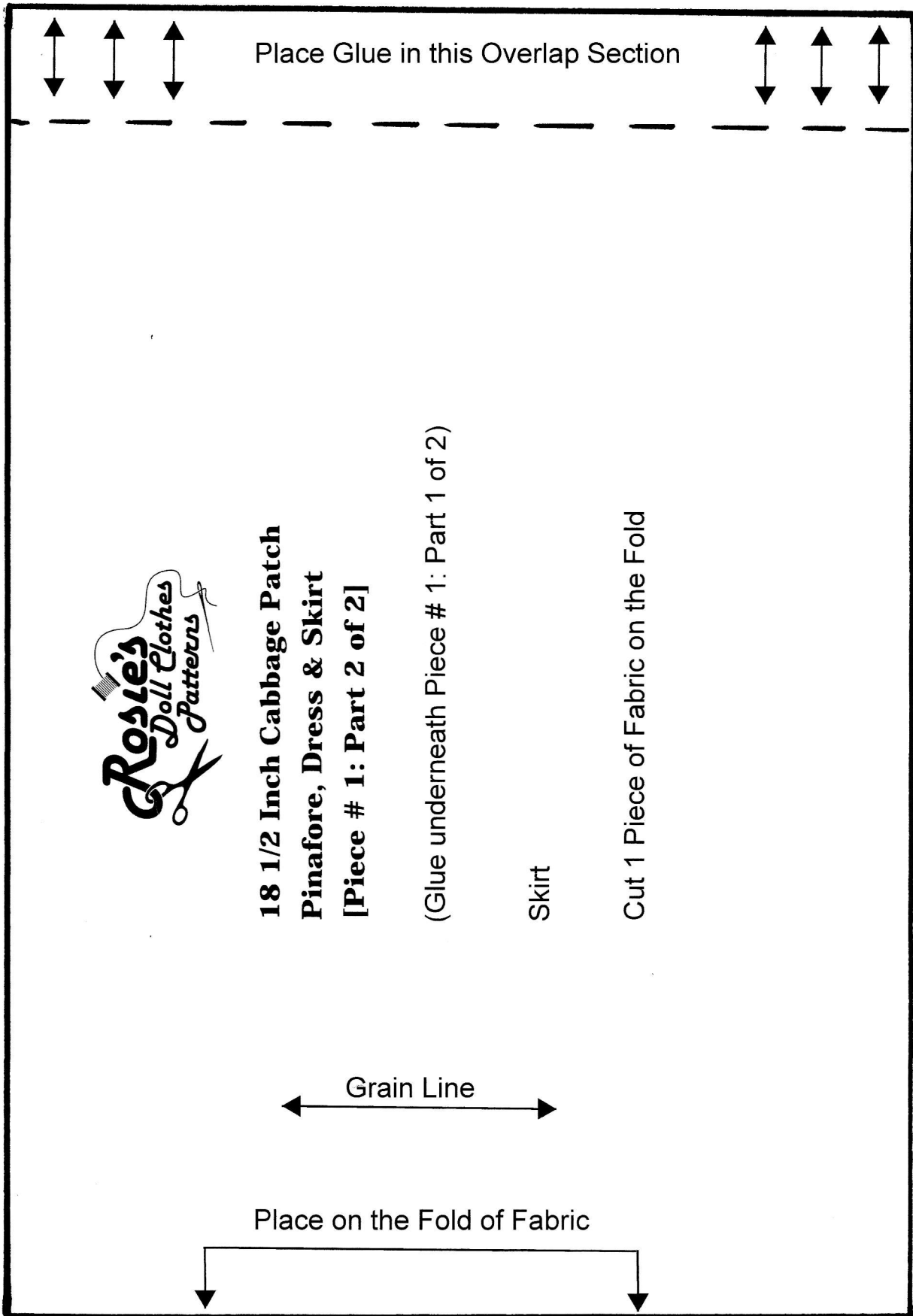
Join to Dashed Line



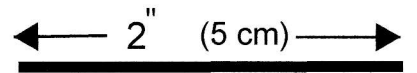
**Cabbage Patch Kids
Pinafore, Dress & Skirt**

← 2" (5 cm) →

Tip: Check This Measurement
Before Cutting Pattern



Cabbage Patch Kids Pinafore, Dress & Skirt



Tip: Check This Measurement Before Cutting Pattern

