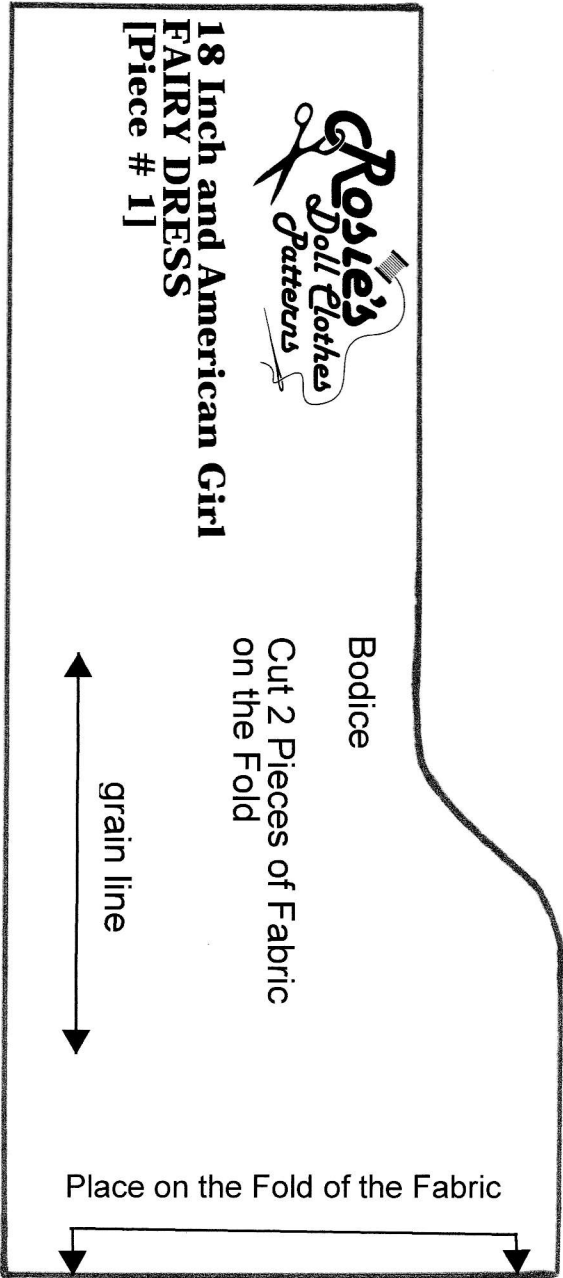
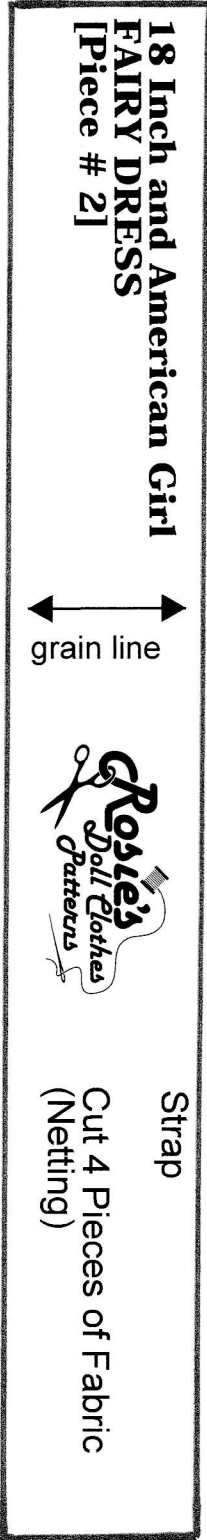


18 Inch and American Girl Fairy Costume



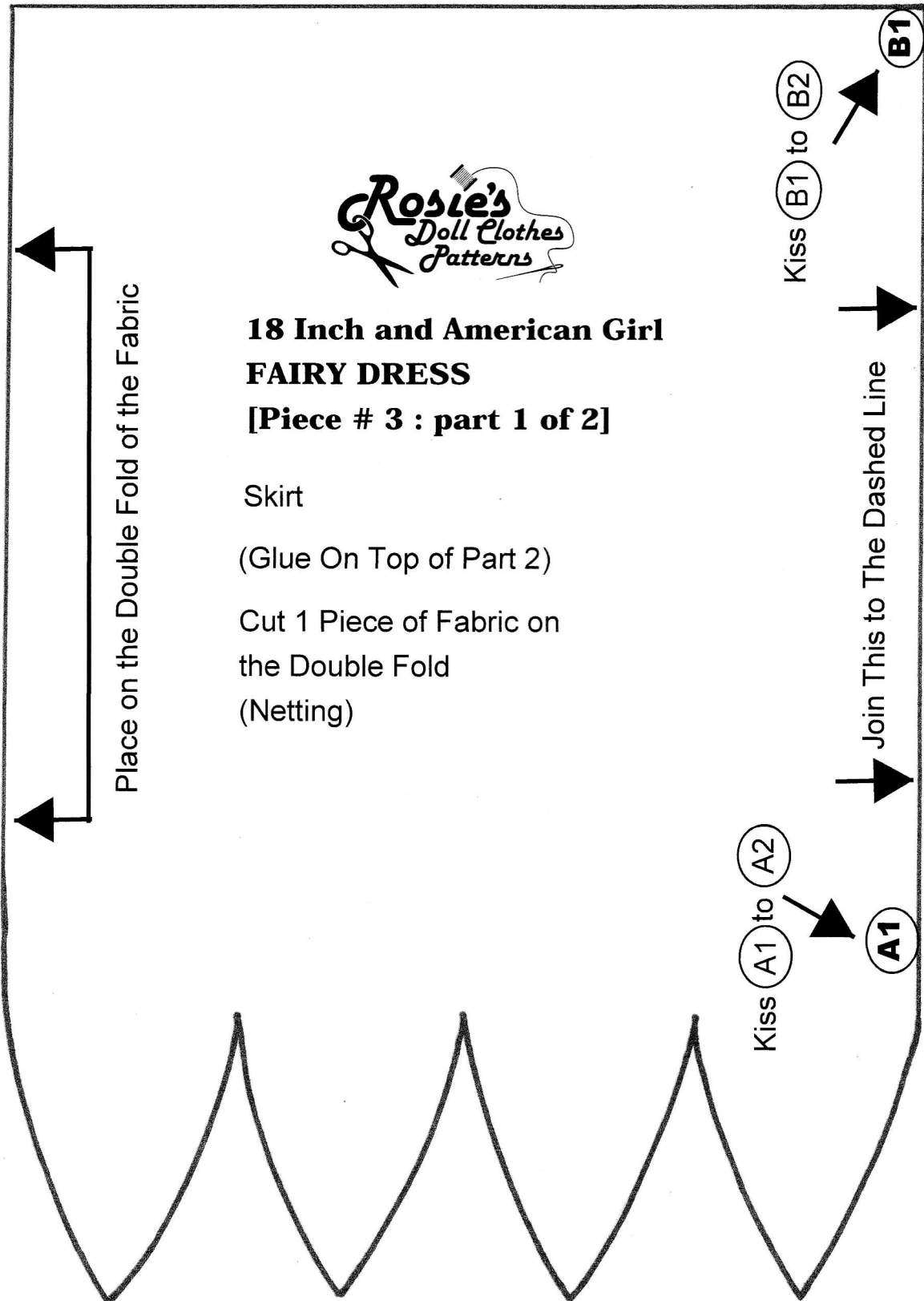
Tip: Check This Measurement Before Cutting Pattern



18 Inch and American Girl Fairy Costume

2" (5 cm)

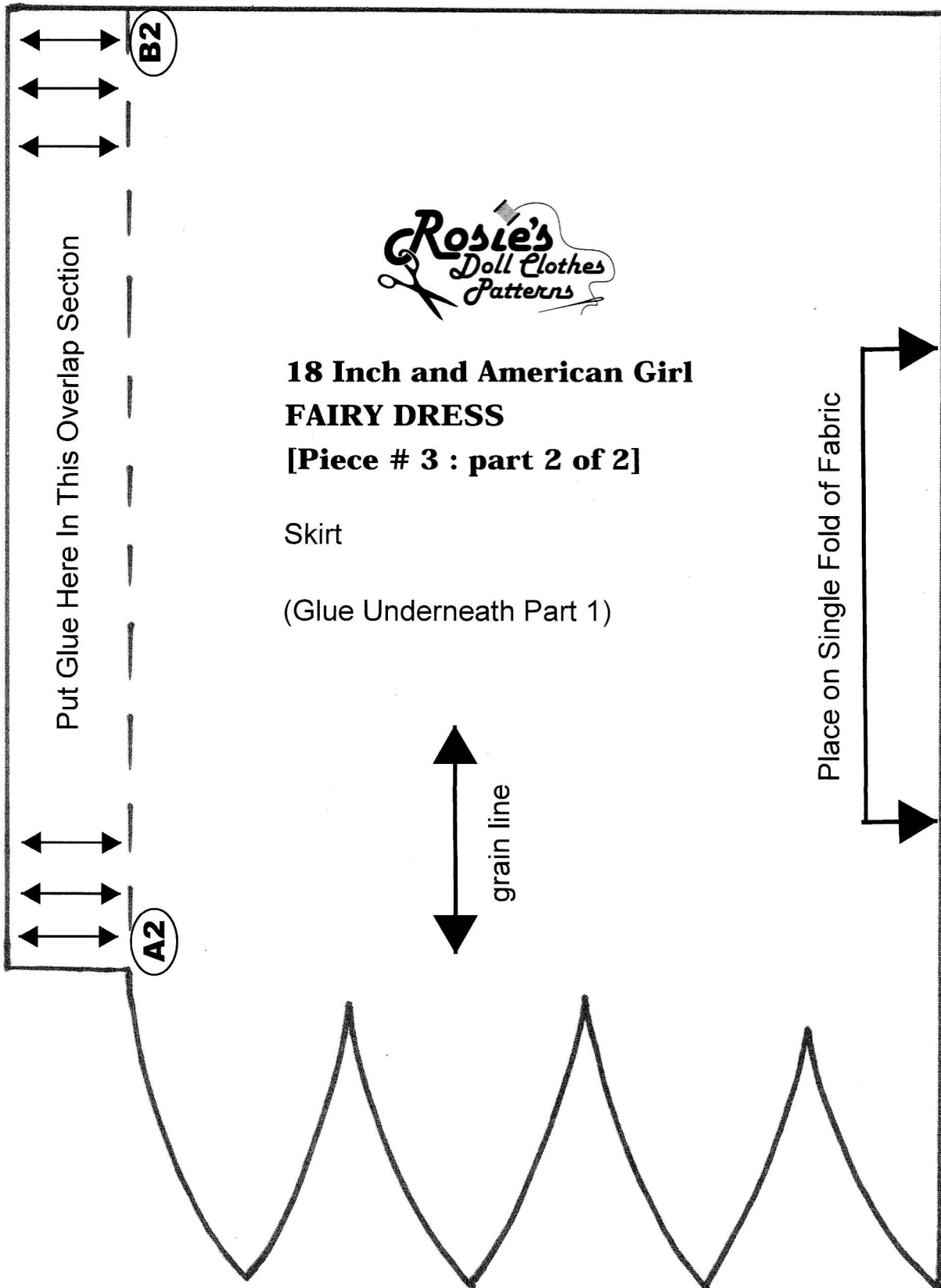
Tip: Check This Measurement Before Cutting Pattern



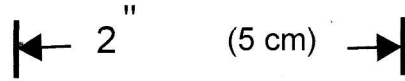
18 Inch and American Girl Fairy Costume

← 2" (5 cm) →

Tip: Check This Measurement Before Cutting Pattern



18 Inch and American Girl Fairy Costume



Tip: Check This Measurement Before Cutting Pattern




18 Inch and American Girl FAIRY DRESS [Piece # 4 : part 1 of 2]


Skirt Lining

(Glue On Top of Part 2)

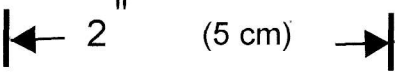
Cut 1 Piece of Fabric on
the Fold

Kiss (B1) to (B2)  **B1**

 Join This to The Dashed Line

Kiss (A1) to (A2)  **A1**

**18 Inch and American Girl
Fairy Costume**



Tip: Check This Measurement Before Cutting Pattern

