

18 1/2 Inch Cabbage Patch Kids Angel Costume



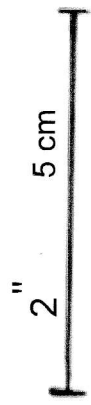
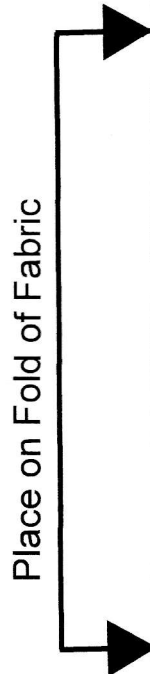
18 1/2 Inch Cabbage Patch Kids ANGEL DRESS

[Piece # 1 : part 1 of 2]

Front

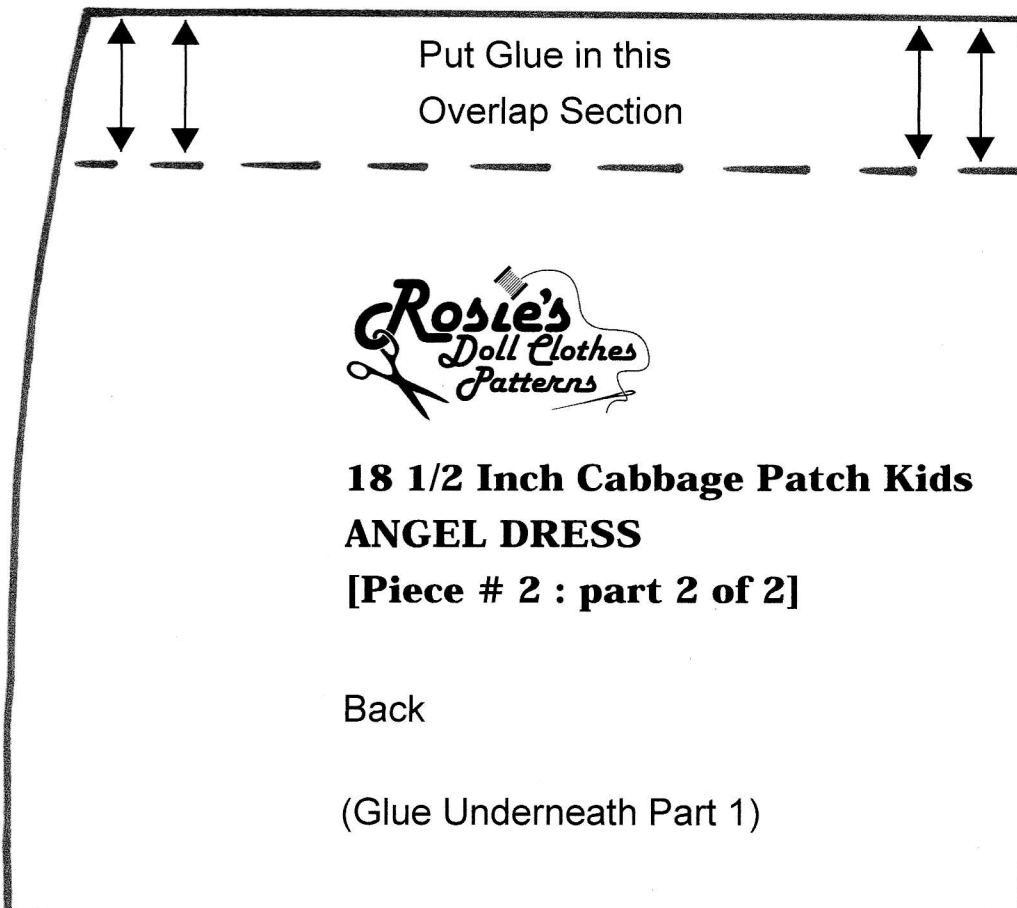
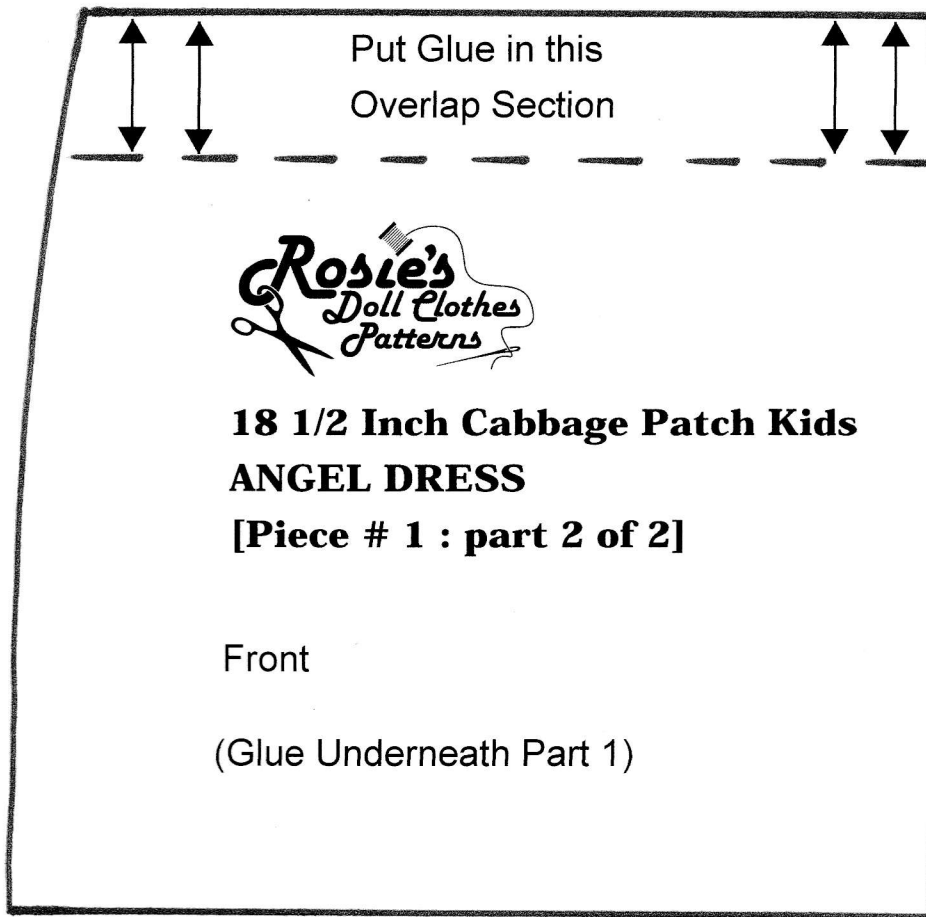
(Glue On Top of Part 2)

Cut 1 Piece of Fabric
on the Fold



TIP: Check This Measurement Before Cutting Pattern

**18 1/2 Inch Cabbage Patch Kids
Angel Costume**



2" (5 cm)

TIP: Check This Measurement Before Cutting Pattern

**18 1/2 Inch Cabbage Patch Kids
Angel Costume**



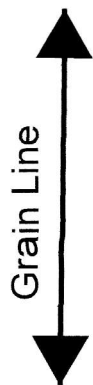
**18 1/2 Inch Cabbage Patch Kids
ANGEL DRESS**

[Piece # 2 : part 1 of 2]

Back

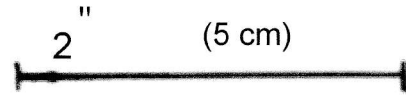
(Glue On Top of Part 2)

Cut 2 Pieces of Fabric

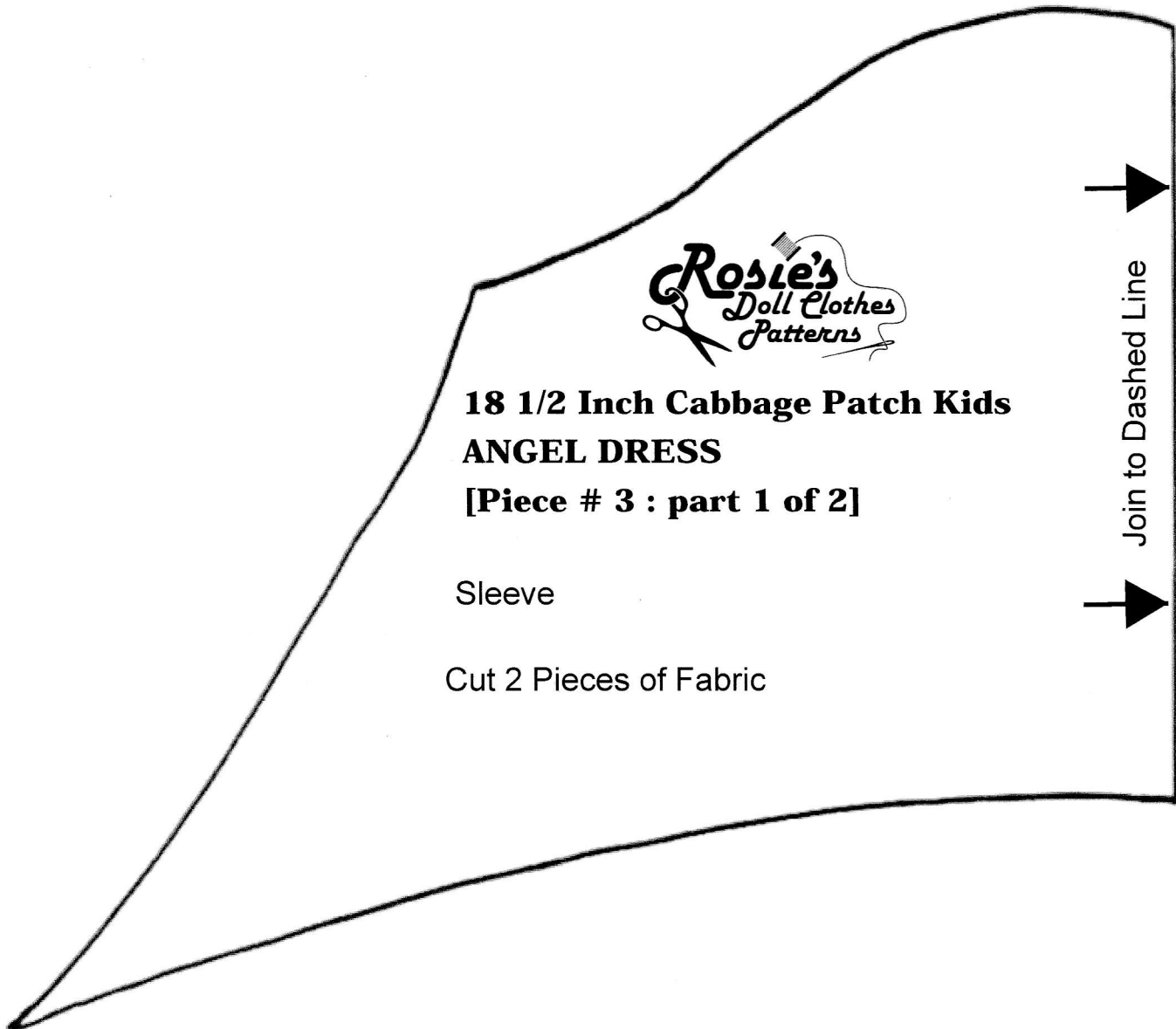


TIP: Check This Measurement Before Cutting Pattern

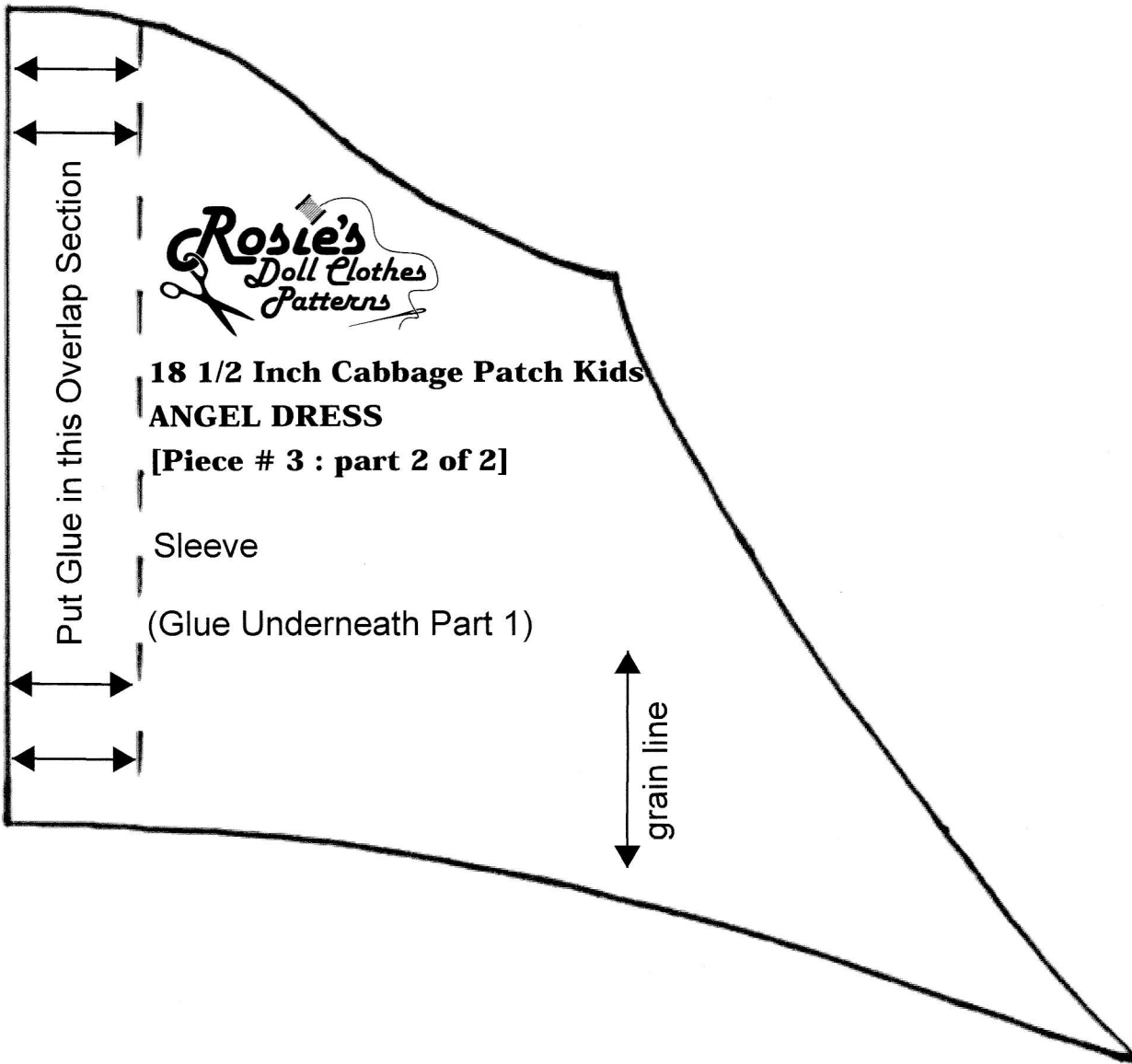
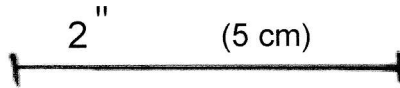
18 1/2 Inch Cabbage Patch Kids Angel Costume



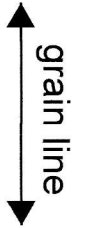
Tip: Check This Measurement Before Cutting Pattern



**18 1/2 Inch Cabbage Patch Kids
Angel Costume**



**18 1/2 Inch Cabbage Patch Kids
ANGEL DRESS
[Piece # 4]**



Neck Trim
Cut 1 Piece of Fabric