

# 18 1/2 Inch Cabbage Patch Kids Witches Costume



## 18 1/2 Inch Cabbage Patch Kids WITCHES DRESS

[Piece # 1 : part 1 of 2]

Front

(Glue On Top of Part 2)

Cut 1 Piece of Fabric  
on the Fold

Place on Fold of Fabric

Maximum Stretch

Join to Dashed Line

2" (5 cm)

TIP: Check This Measurement Before Cutting Pattern

**18 1/2 Inch Cabbage Patch Kids  
Witches Costume**



**18 1/2 Inch Cabbage Patch Kids  
WITCHES DRESS**

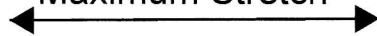
**[Piece # 2 : part 1 of 2]**

Back

(Glue On Top of Part 2)

Cut 2 Pieces of Fabric

Maximum Stretch

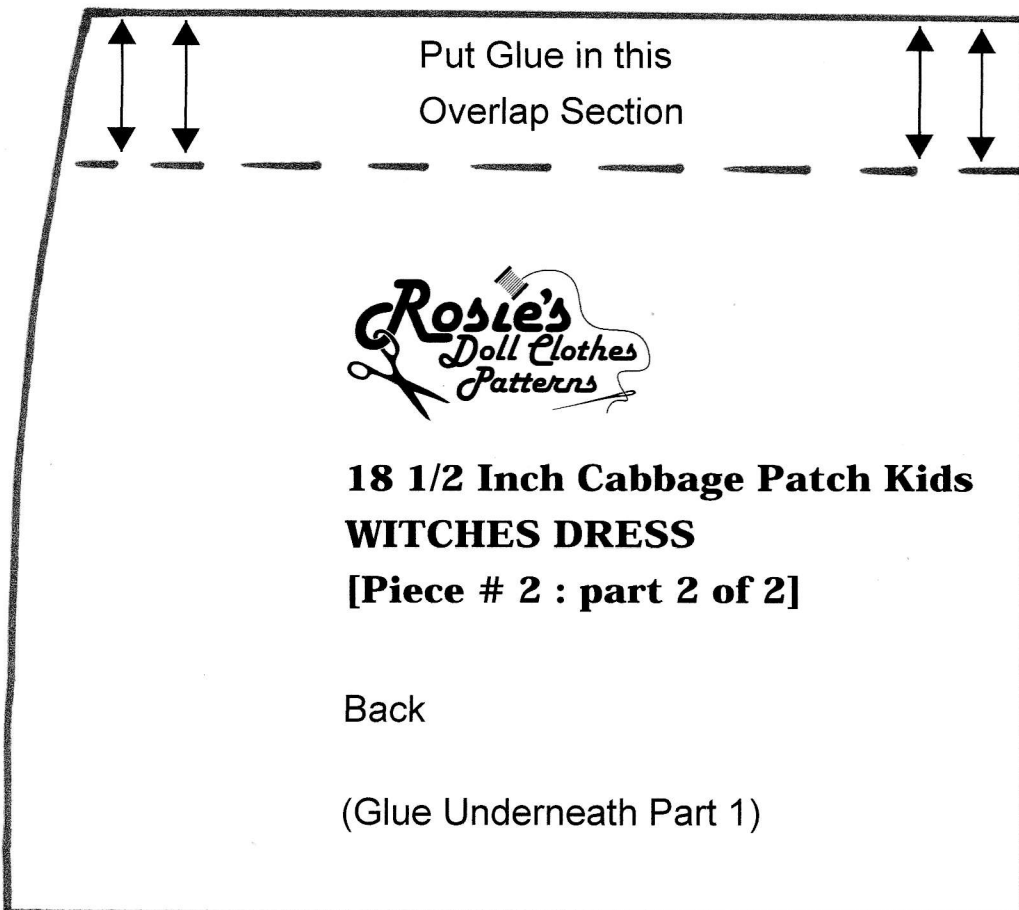
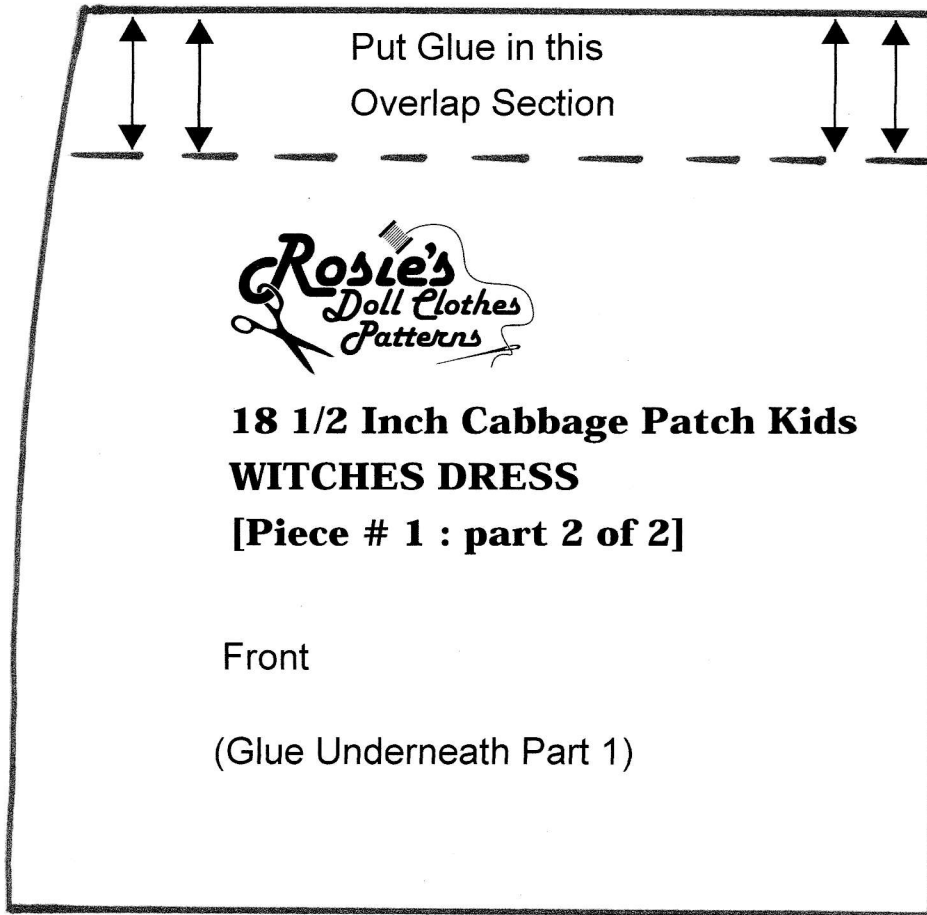


Join to Dashed Line



TIP: Check This Measurement Before Cutting Pattern

**18 1/2 Inch Cabbage Patch Kids  
Witches Costume**



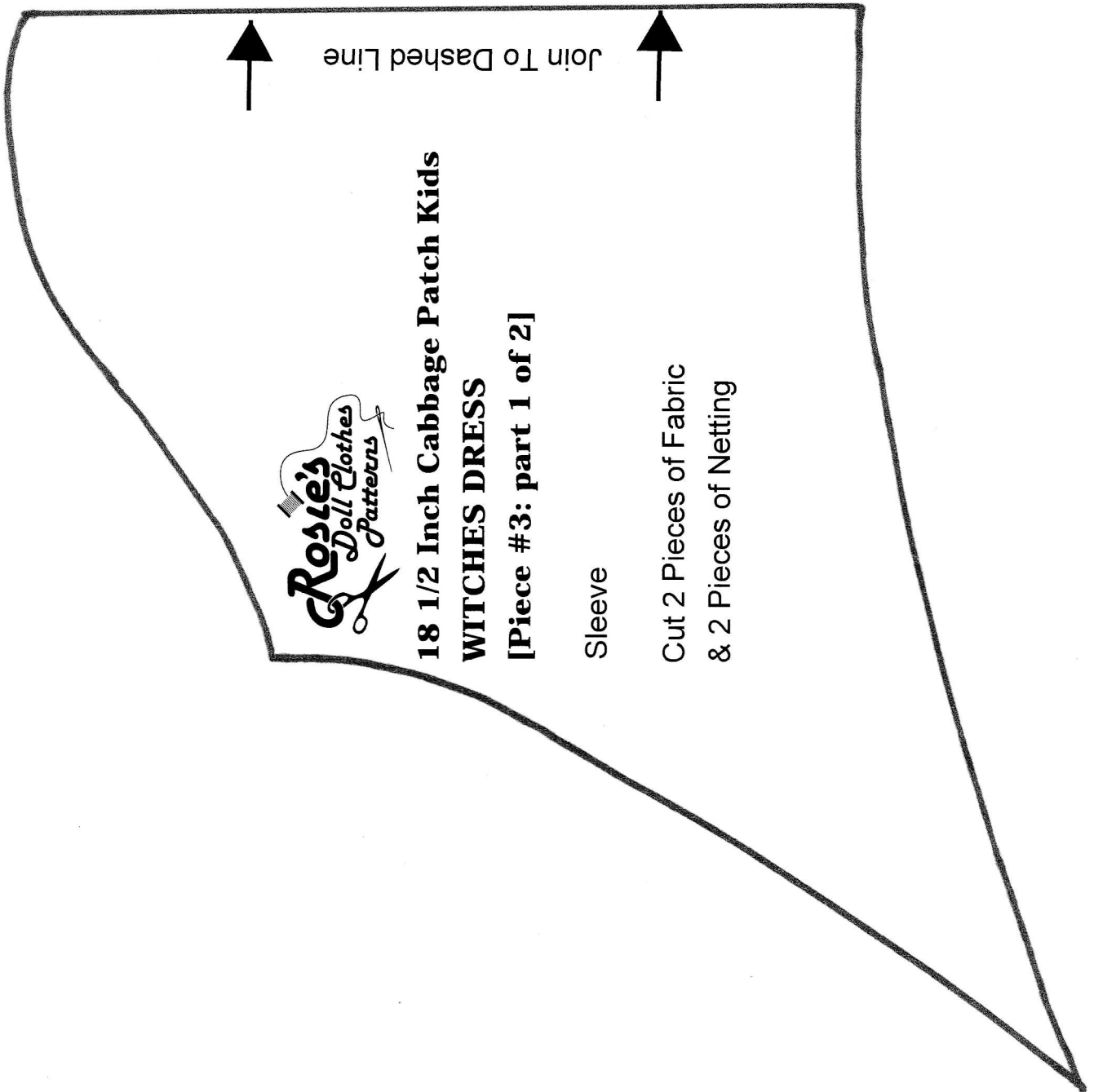
2" (5 cm)

TIP: Check This Measurement Before Cutting Pattern

# 18 1/2 Inch Cabbage Patch Kids Witches Costume

← 2" (5 cm) →

Tip: Check This Measurement Before Cutting Pattern



# 18 1/2 Inch Cabbage Patch Kids Witches Costume

← 2" (5 cm) →

Tip: Check This Measurement Before Cutting Pattern

