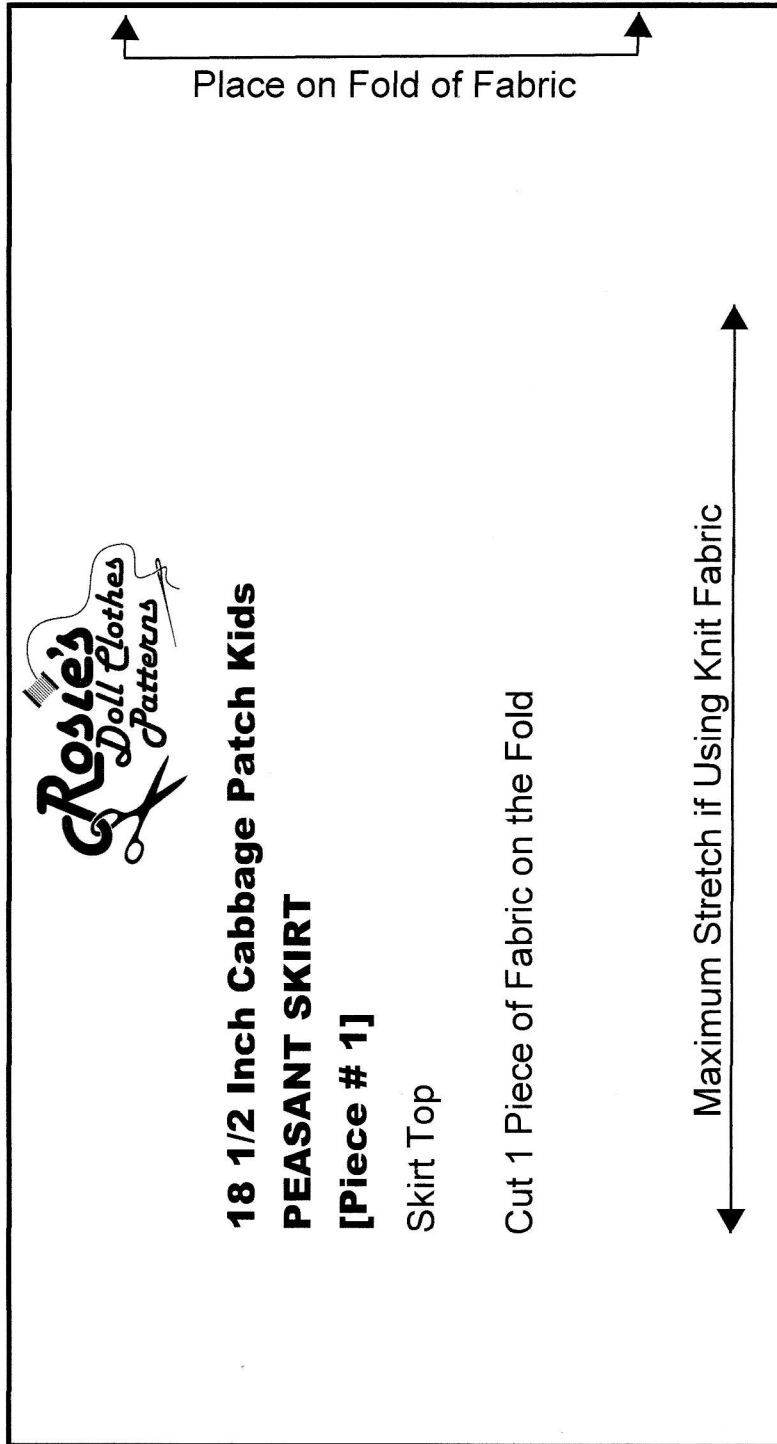


**18 1/2 Inch Cabbage Patch Kids
Peasant Skirt**

← 2" (5 cm) →

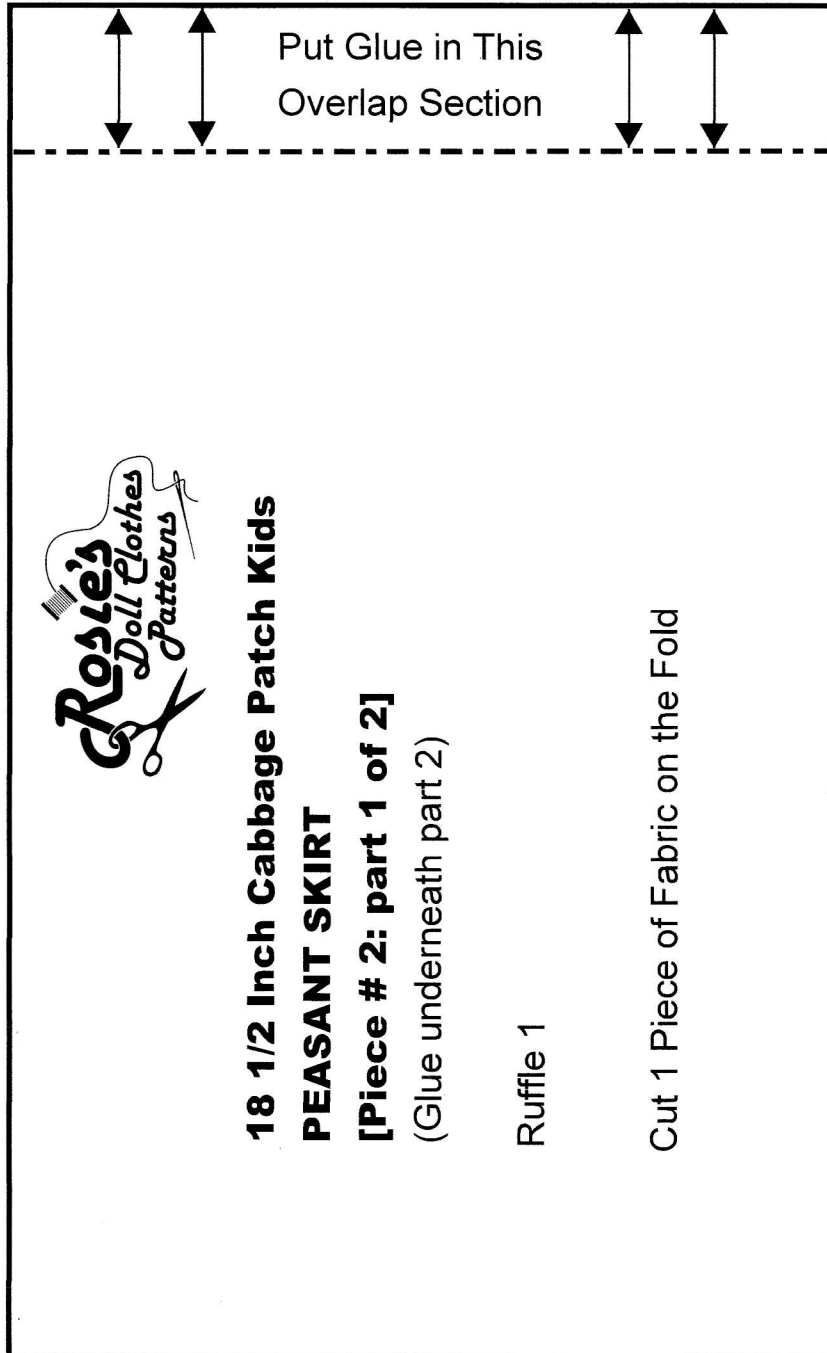
Tip: Check This Measurement
Before Cutting Pattern



**18 1/2 Inch Cabbage Patch Kids
Peasant Skirt**

← 2" (5 cm) →

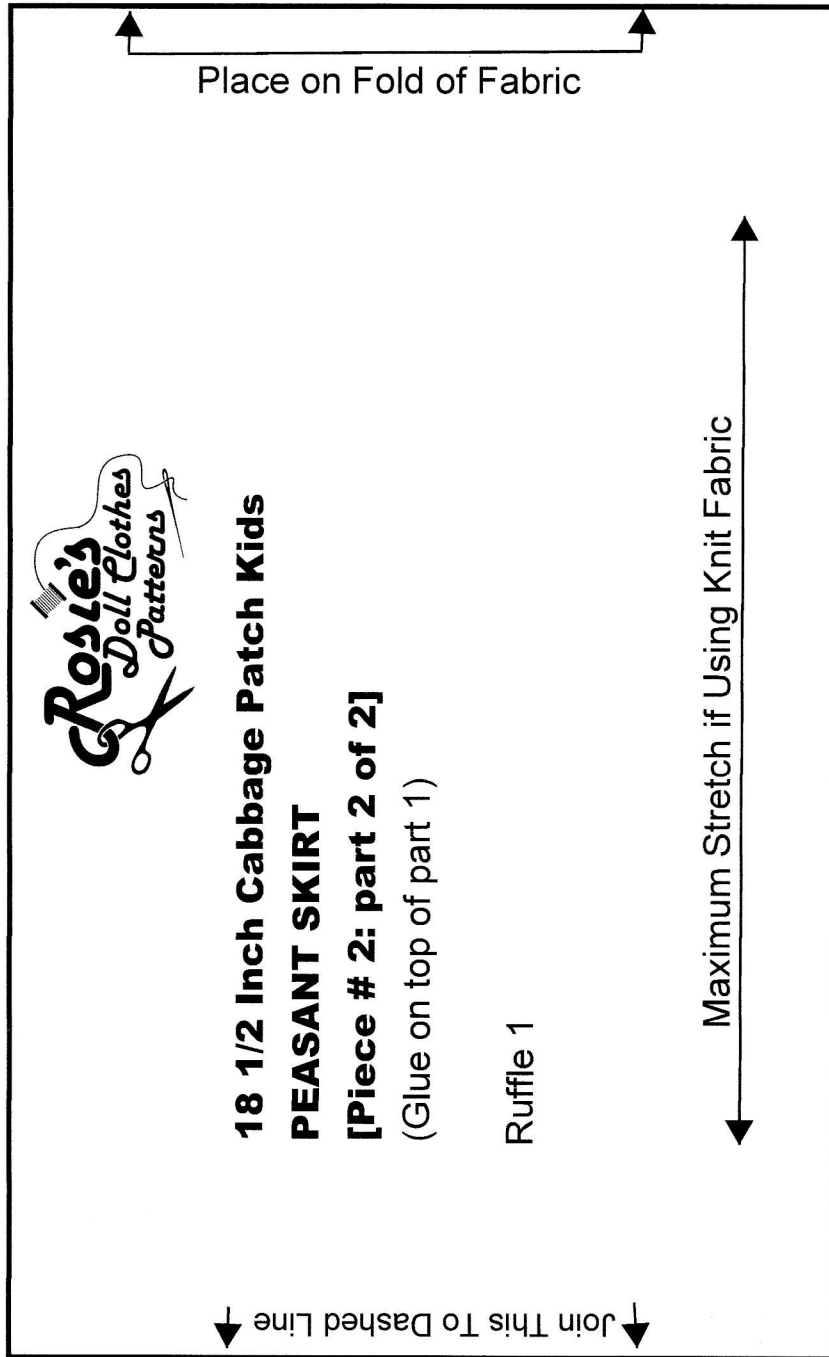
Tip: Check This Measurement
Before Cutting Pattern



**18 1/2 Inch Cabbage Patch Kids
Peasant Skirt**

← 2" (5 cm) →

Tip: Check This Measurement
Before Cutting Pattern



18 1/2 Inch Cabbage Patch Kids Peasant Skirt

← 2" (5 cm) →

Tip: Check This Measurement Before Cutting Pattern

