

**18 1/2 Inch Cabbage Patch Kids  
Winter Nightie**

← 2" (5 cm) →

Tip: Check This Measurement  
Before Cutting Pattern



Place on Fold of Fabric

**18 1/2 Inch Cabbage Patch Kids  
WINTER NIGHTIE  
[ Piece # 1 ]**

Front

Cut 1 Piece of Fabric on the Fold

**18 1/2 Inch Cabbage Patch Kids  
Winter Nightie**

← 2" (5 cm) →

Tip: Check This Measurement  
Before Cutting Pattern



**18 1/2 Inch Cabbage Patch Kids  
WINTER NIGHTIE  
[ Piece # 2 ]**

Back

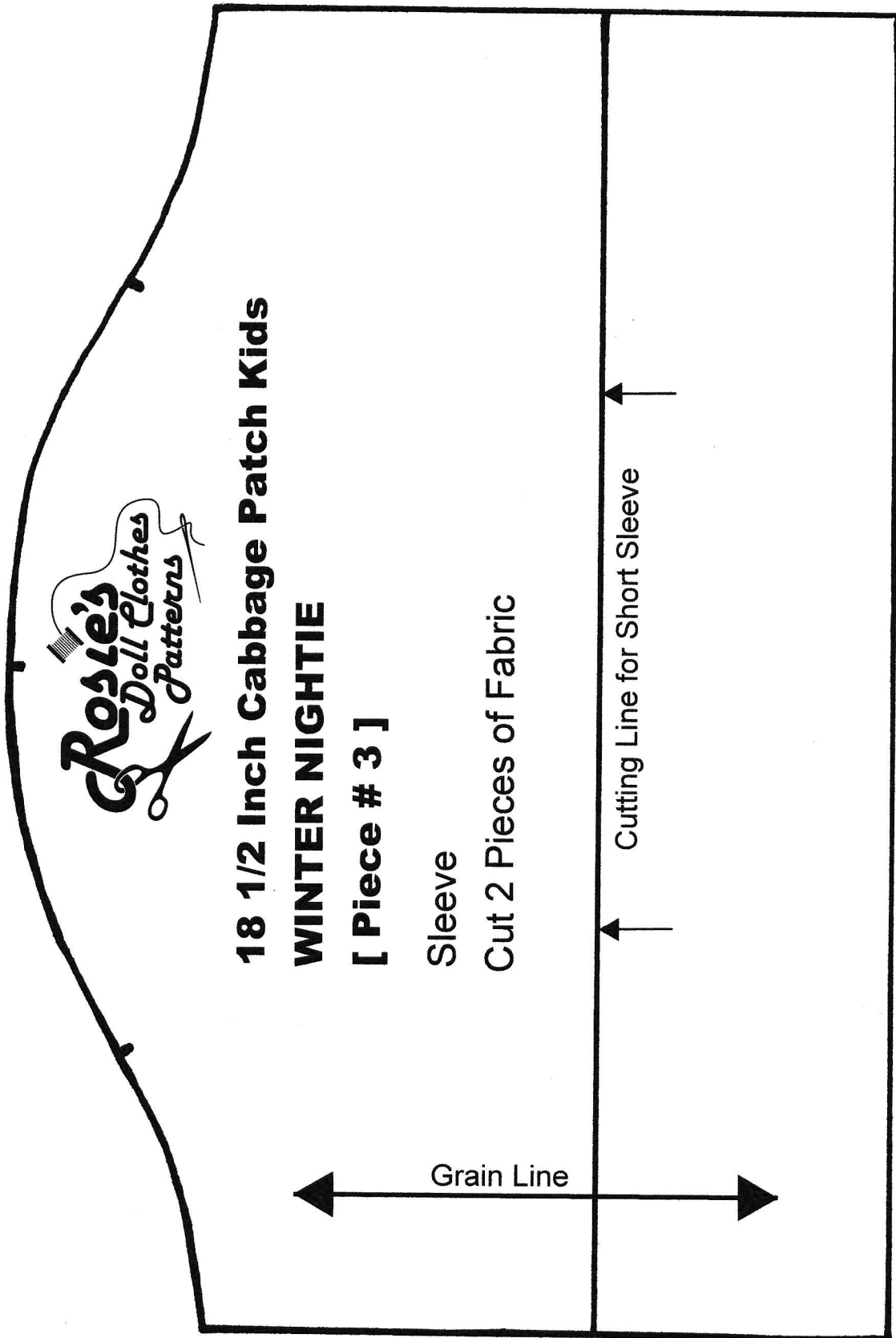
Cut 2 Pieces of Fabric



**18 1/2 Inch Cabbage Patch Kids  
Winter Nightie**

← 2" (5 cm) →

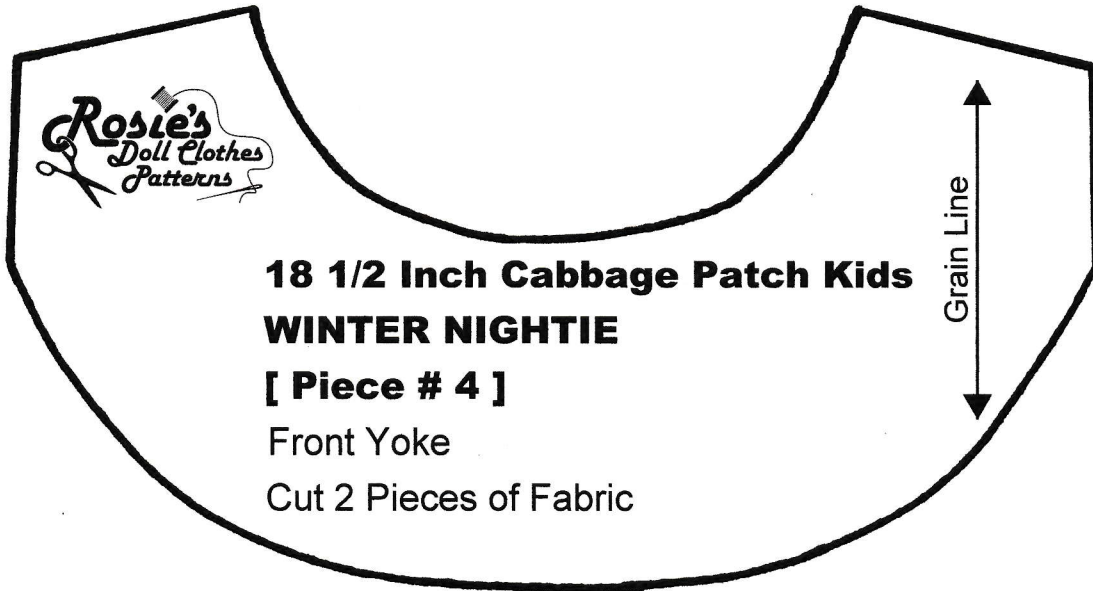
Tip: Check This Measurement  
Before Cutting Pattern



**18 1/2 Inch Cabbage Patch Kids  
Winter Nightie**

← 2 (5 cm) →

Tip: Check This Measurement  
Before Cutting Pattern



**18 1/2 Inch Cabbage Patch Kids  
Winter Nightie**

← 2" (5 cm) →

Tip: Check This Measurement  
Before Cutting Pattern

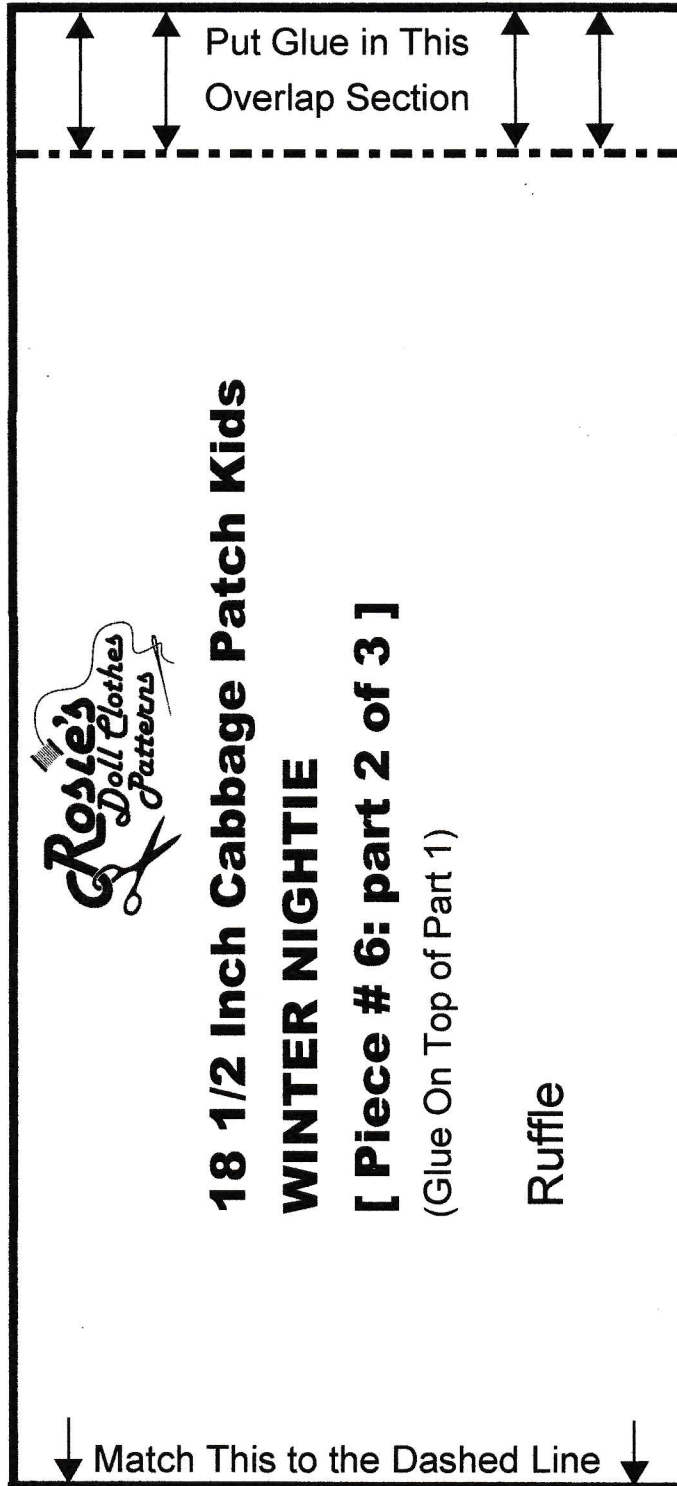
**Pattern Piece #6 - Ruffle**  
If you prefer to cut the Ruffle  
without a pattern, cut a rectangle  
42" x 3 1/2" (105cm x 9cm)



**18 1/2 Inch Cabbage Patch Kids  
Winter Nightie**

← 2" (5 cm) →

Tip: Check This Measurement  
Before Cutting Pattern



**18 1/2 Inch Cabbage Patch Kids  
Winter Nightie**

← 2" (5 cm) →

Tip: Check This Measurement  
Before Cutting Pattern

